

www.primeralabel.com

763-475-6676

Primera Tech Support:

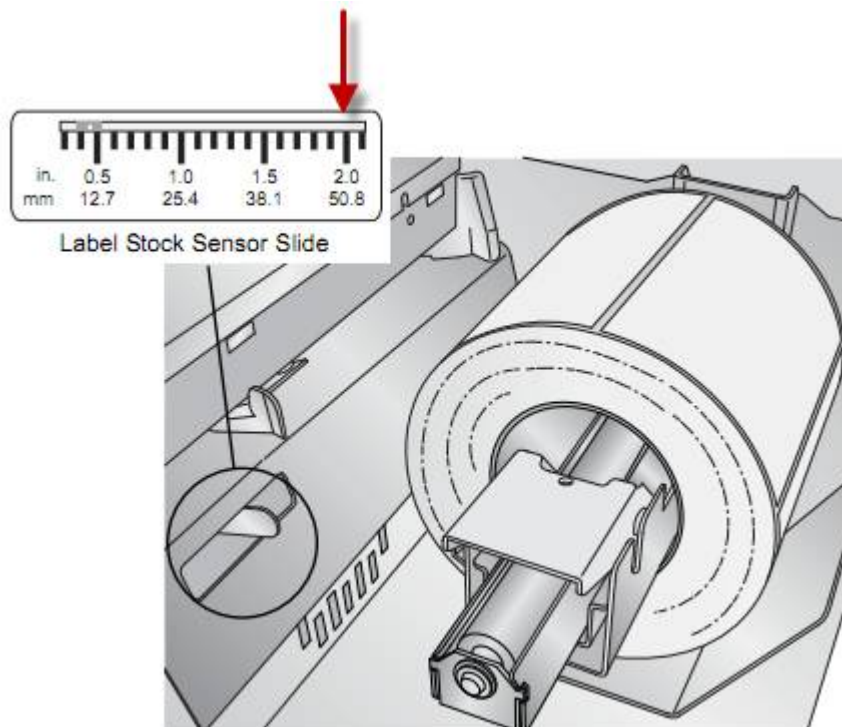
http://www.primeralabel.com/contact_tech_support.php

763-475-6669

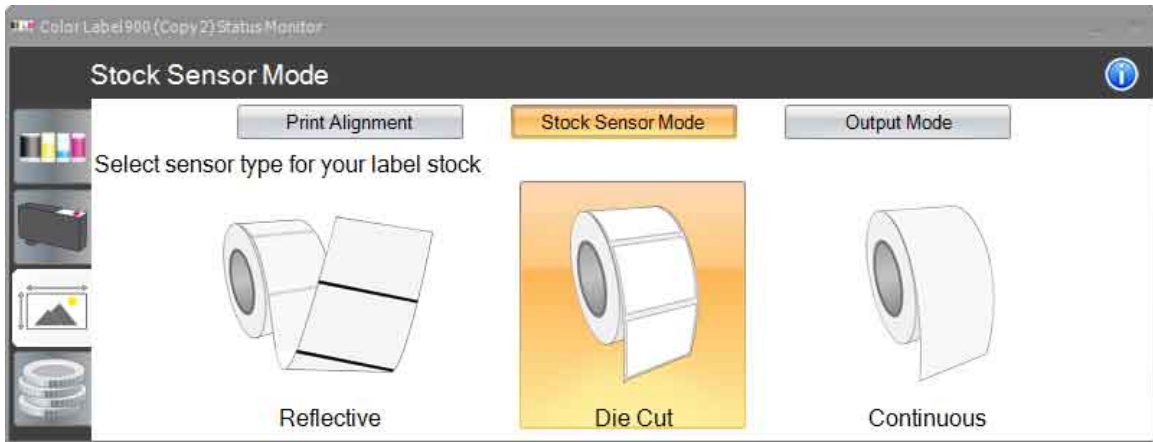
support@primera.com

How to print Visitor Pass Solutions using a Primera LX900

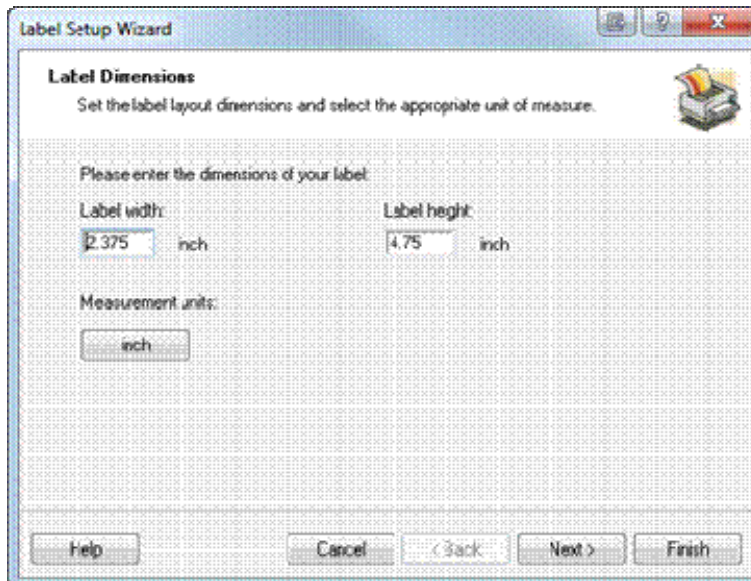
1. Set the label sensor position to 2.0" (all the way to the right).



2. The Die Cut setting is located in the Status monitor (see below).
Select the Stock Sensor Mode.



3. Set the label size in your printing application to 2.375 x 4.75". This is the full height of the label including the fold under tab. This is important! The printer needs to know the full height of the label so that it will know when to start looking for the next label. If you set it to 4", it starts looking too early. You then may have variable print starting positions. You may have to adjust the placement of the printable area on the label so that there is approximately .75" of unprinted space on the label. This will leave space for the fold under tab. See below.



St. Anthony Health Services

VISITOR

Friday, August 18, 2006
11:15 am

4th Floor, Radiology

Alison L. Wrightman



.75" of space